



13 Fountain Street, Pontypridd, CF37 2LS
£750 Per Calendar Month

**** Popular Village Location ** Three Bedrooms ** Modern Kitchen/Breakfast Room ****

Located in the popular village of Trehafod, a short walk from local shop, school and train station and minutes from main roads and Pontypridd Town Centre.

This mid terraced house comprises entrance hall, lounge, modern kitchen/breakfast room with oven & hob, bathroom with white suite and three bedrooms.

There is a paved garden with lane access.

Available now.

Entrance Hall

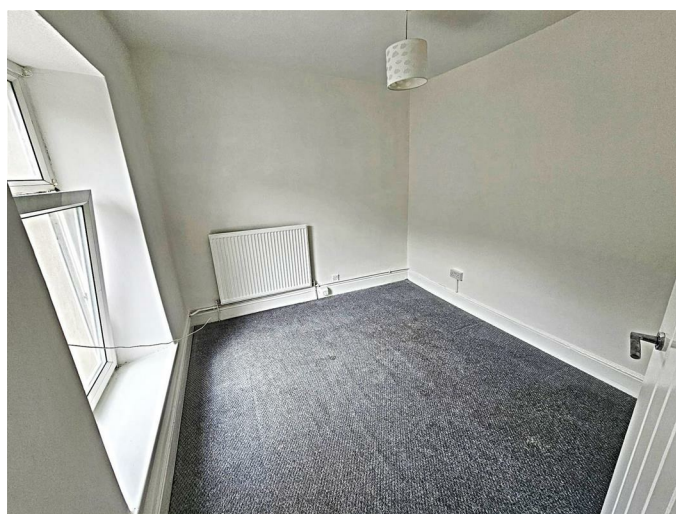
Lounge 12'6" x 9'10" (3.82 x 3.02)



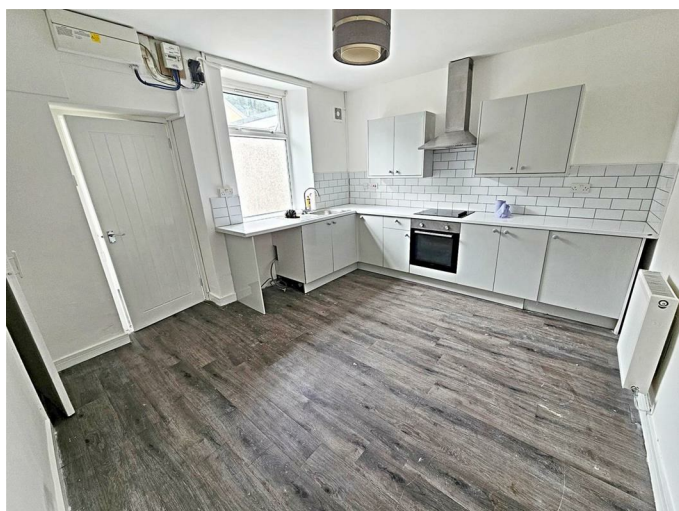
Bedroom 1 12'5" x 8'8" (3.80 x 2.65)



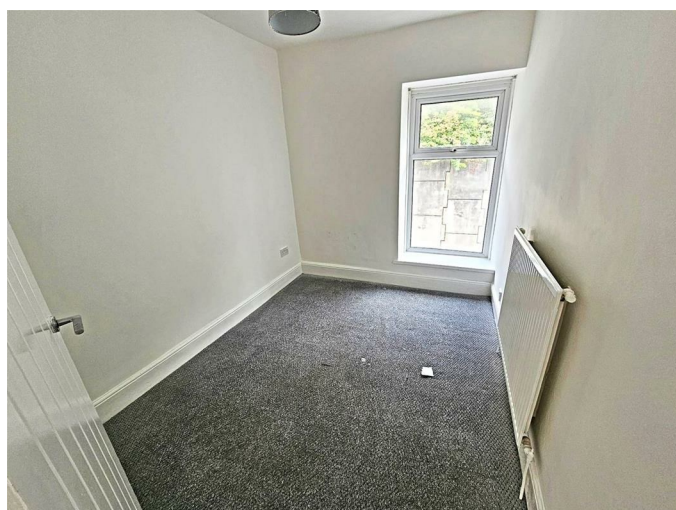
Bedroom 2 10'5" x 9'0" (3.19 x 2.75)



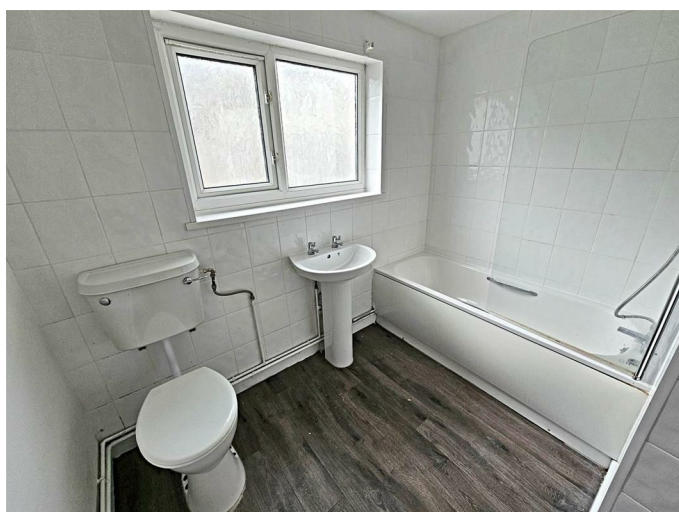
Kitchen/Breakfast Room 12'8" x 11'5" (3.88 x 3.50)



Bedroom 3 9'4" x 7'5" (2.85 x 2.27)



Bathroom



First Floor Landing

Rear Garden

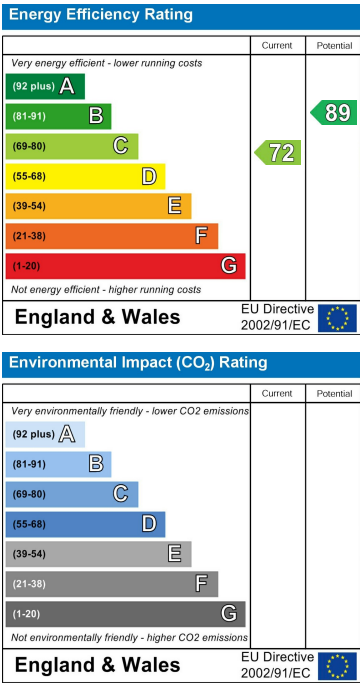


Floor Plan

Area Map



Energy Efficiency Graph



These particulars, whilst believed to be accurate are set out as a general outline only for guidance and do not constitute any part of an offer or contract. Intending purchasers should not rely on them as statements of representation of fact, but must satisfy themselves by inspection or otherwise as to their accuracy. No person in this firms employment has the authority to make or give any representation or warranty in respect of the property.